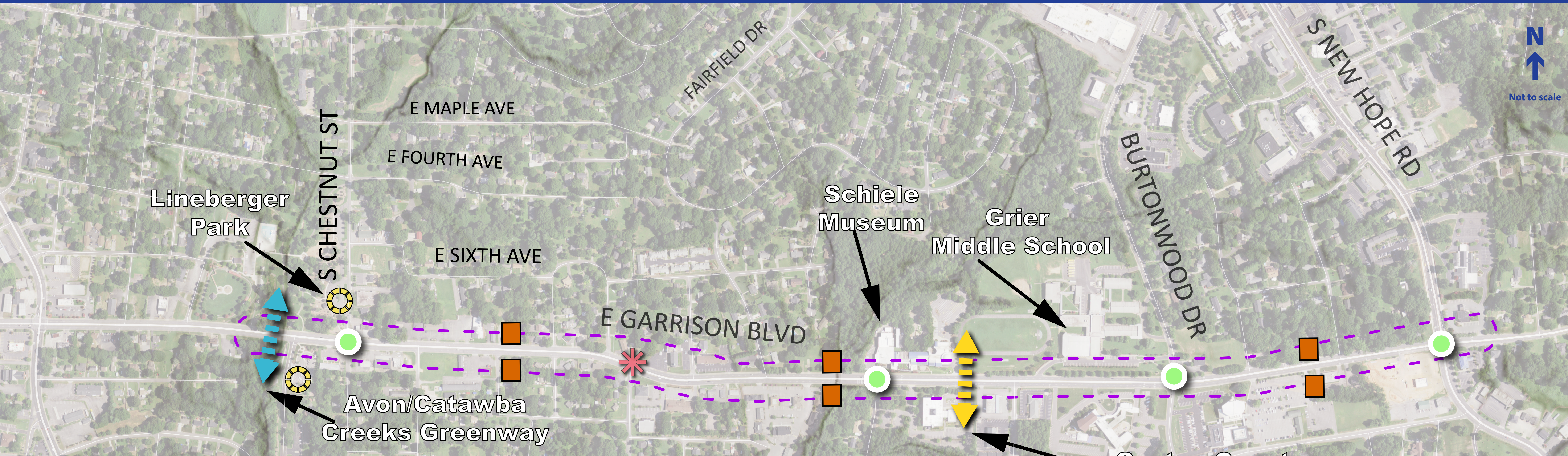


Garrison LEARNS Corridor

(Library, Education, Arts, Recreation, Nature, Science)

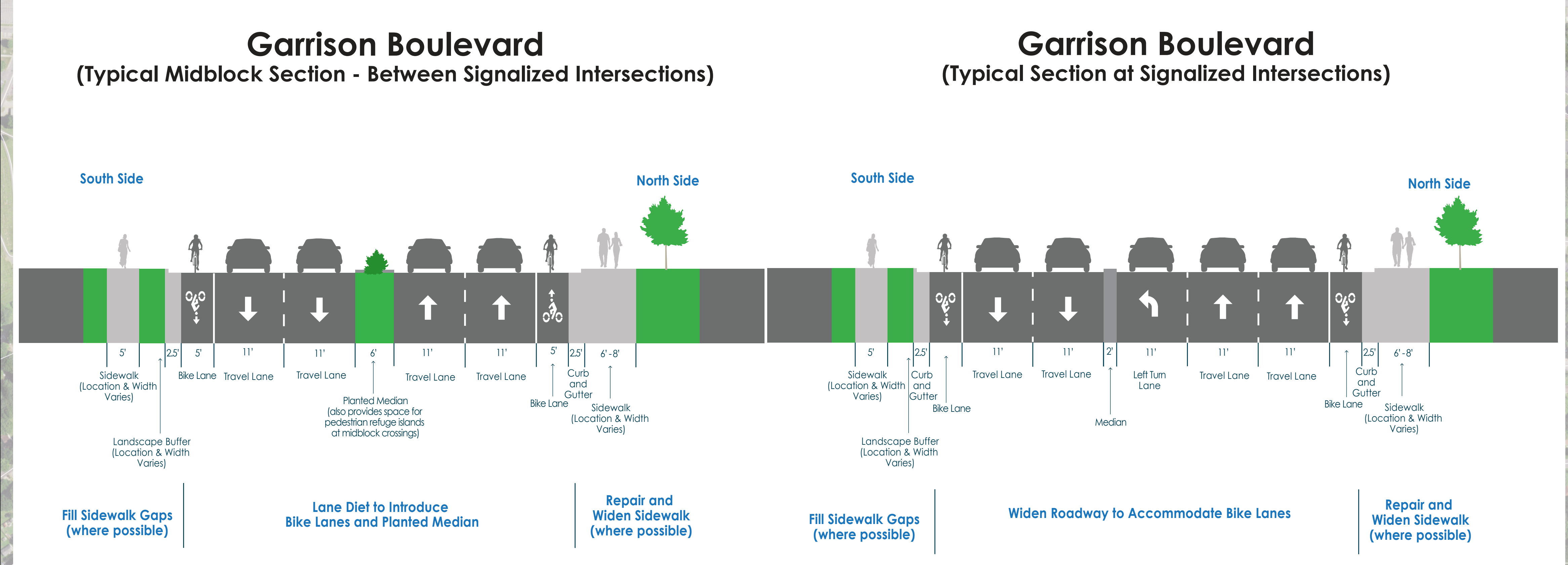
Proposed Improvements



- Full Extent of Garrison Blvd Corridor:**
- 5' Bicycle Lanes with Crossing Treatments at Intersections
 - Lane Diet (Narrowing from 12' to 11')
 - Speed Limit Reduction (45 mph to 35 mph)
 - Landscaped Medians and Planting Strip (Access Management, Safety, & Aesthetic Improvement)
 - Improved Lighting
 - Mill and Resurface
 - Repair and Widen Existing North-Side Sidewalk
 - Fill Sidewalk Gaps on South Side

- At Existing Intersections:**
- New ADA Curb Ramps
 - High-Visibility Crosswalks
 - Pedestrian Countdown Timers
 - Signal Mast Arms
 - Improved Signal Timing

- Other Key Improvements:**
- Improved Greenway Underpass (currently impassable)
 - New Signal and Crossings at Laurel Lane
 - Pedestrian Hybrid Beacon Connecting Middle School and Schiele Museum to Library
 - Radar Enabled Driver Feedback Signs



- Improve Pedestrian & Bicycle Conditions, Calm Traffic & Improve Driver Safety, New Landscaping
- ✳ New Signal & Crossings at Laurel Ln.
- Improve Existing Pedestrian Crossings at Traffic Signal
- ←←← Improve the Avon/Catawba Creeks Greenway Underpass
- New Mid-Block Crossing (Pedestrian Hybrid Beacon)
- Radar Enabled Speed Feedback Signs