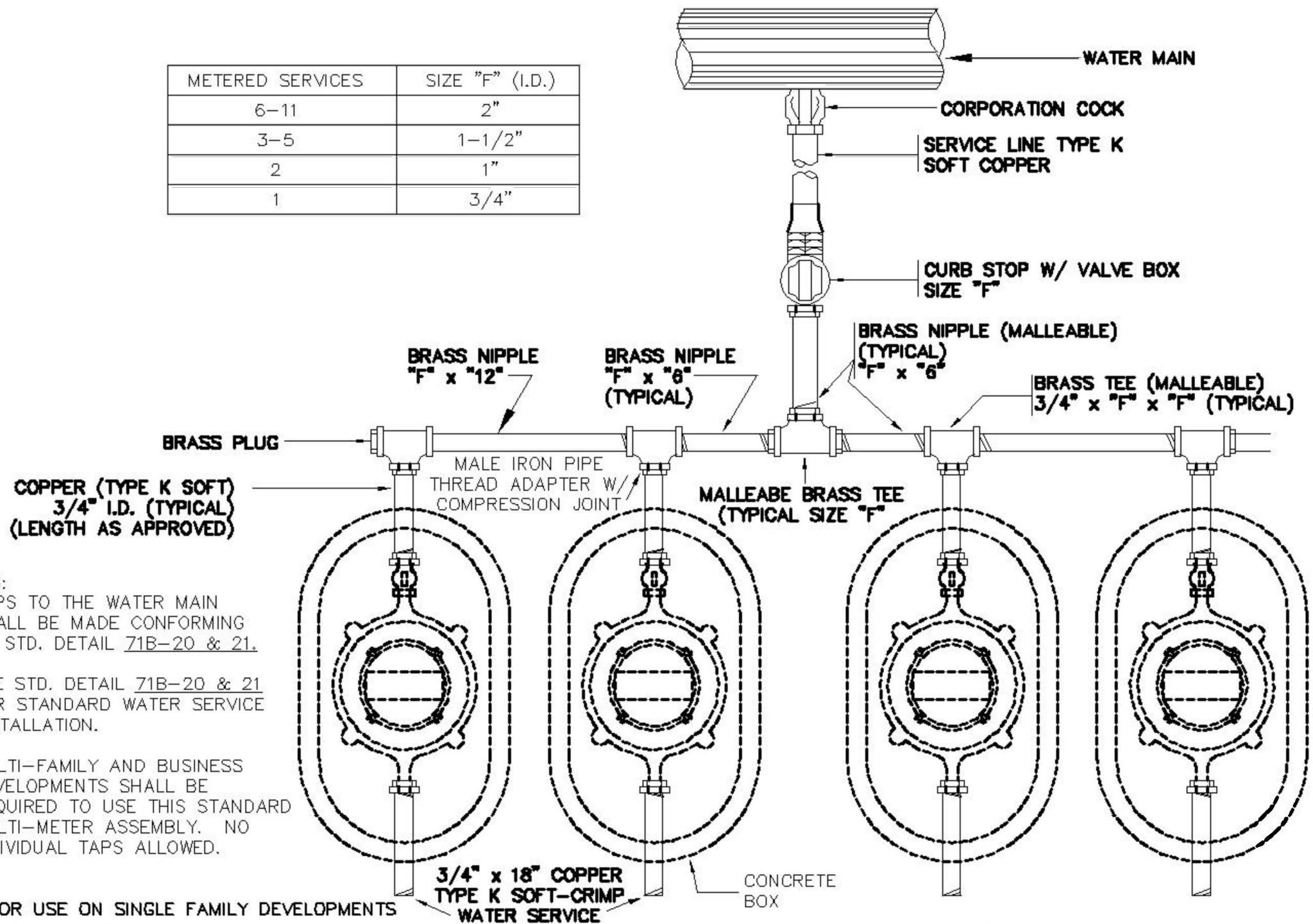


METERED SERVICES	SIZE "F" (I.D.)
6-11	2"
3-5	1-1/2"
2	1"
1	3/4"



NOTES:
 TAPS TO THE WATER MAIN SHALL BE MADE CONFORMING TO STD. DETAIL 71B-20 & 21.

SEE STD. DETAIL 71B-20 & 21 FOR STANDARD WATER SERVICE INSTALLATION.

MULTI-FAMILY AND BUSINESS DEVELOPMENTS SHALL BE REQUIRED TO USE THIS STANDARD MULTI-METER ASSEMBLY. NO INDIVIDUAL TAPS ALLOWED.

NOT FOR USE ON SINGLE FAMILY DEVELOPMENTS

REVISED	F.B.	PG.	DATE: AUGUST 28, 1984
JW 03/03			SCALE: NONE
			DRAWN BY: KBC
			CHECKED BY: DCC/FAP
			CITY ENGINEER: DEC

STANDARD DETAIL

STANDARD MULTI-METER ASSEMBLY

OFFICE OF THE
 CITY ENGINEER
 GASTONIA, N.C.

FILE NO. **71B-22**