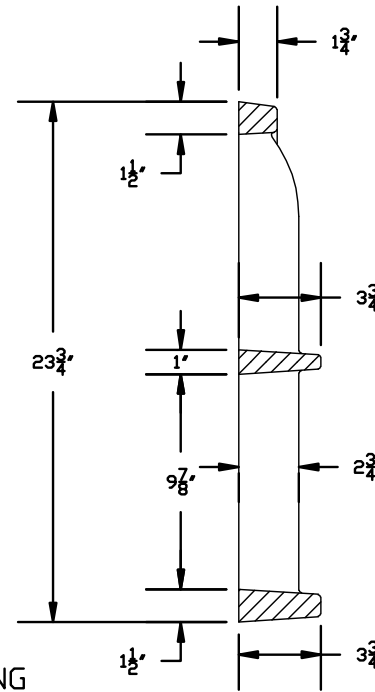
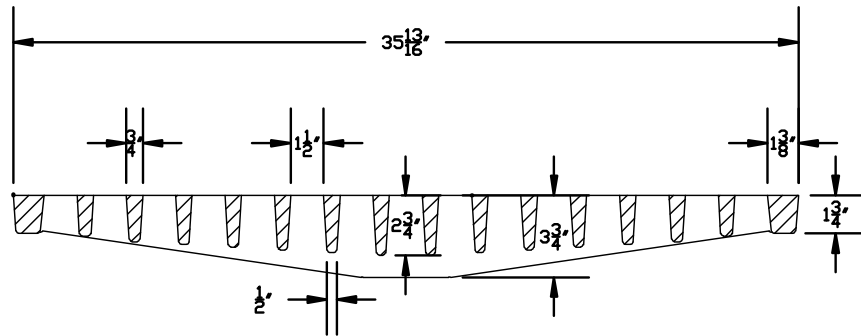


3/4" (19mm) LETTERING  
RECESSED FLUSH



SECTION



SECTION

NOTE:

1. GRAY IRON A.S.T.M. A48 CL35
2. PRODUCT NO. 44066130 CATALOG NO. V-4066-1 (EAST JORDAN IRON WORKS, INC. EAST JORDAN, MI.)
3. ENNIS 840.03 TYPE E
4. US FOUNDRY USF 5181-6420

REVISED	F.B.	PG.	DATE: <b>2/26/01</b>
<b>5/18/05</b>			SCALE: <b>None</b>
			DRAWN BY: <b>JHD</b>
			CHECKED BY:
			CITY ENGINEER: <b>JPB</b>

**Standard Detail**  
**Standard Catch Basin Grate**  
**Bi-Directional Flow**

OFFICE OF THE  
CITY ENGINEER  
GASTONIA, N.C.

FILE NO. **71C-1**