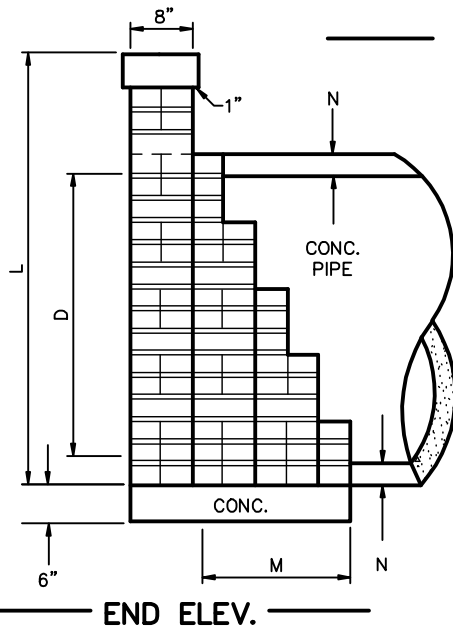


NOTE: ADD THESE DIMENSIONS TO OVERALL DIMENSIONS ON FILE NO. 71C-18 & 19 FOR BRICK HEADWALLS

COMMON DIM.			
D	L	M	N
15"	2'-5"	1'-8"	1-7/8"
18"	2'-8"	1'-8"	2"
24"	3'-4"	2'-0"	2-1/2"
30"	3'-9"	2'-4"	2-3/4"
36"	4'-3"	2'-4"	3"
42"	4'-11"	2'-8"	3-1/2"
48"	5'-7"	3'-0"	4"

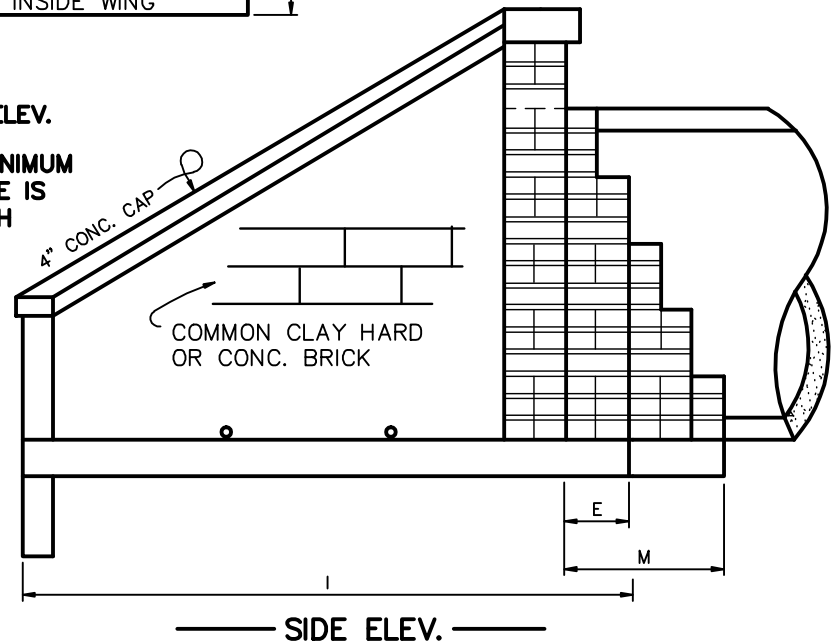
THESE DIMENSIONS ARE FOR END ELEV. FOR BRICK HW. FOR 48" RCP & UNDER



FRONT ELEV.

NOTE: SEE 71C-15 FOR TOP ELEV.

NOTE: 1 (ONE) CUBIC FOOT MINIMUM OF #57 WASHED STONE IS REQUIRED BEHIND EACH WEEP HOLE.



REVISED	F.B.	PG.	DATE: 4/20/74
11/1/81			SCALE: None
9/14/90			DRAWN BY: PNR
			CHECKED BY: NBM, FAP
			CITY ENGINEER: DEC

Standard Detail

**Brick Headwall With Wing Walls
For 48" RCP and Under
(Without Reinforced Steel)**

OFFICE OF THE
CITY ENGINEER
GASTONIA, N.C.

FILE
NO.

71C-14