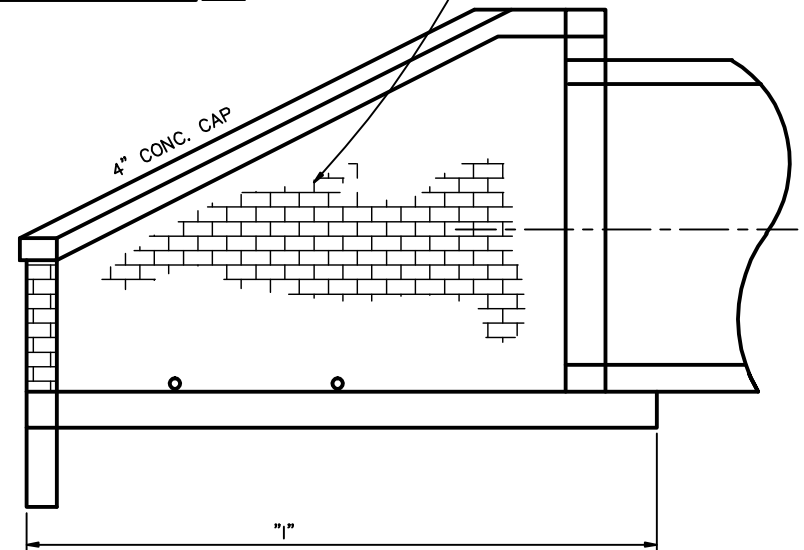


— FRONT ELEV. —

NOTE: SEE FILE NO. 71C-18 & 19  
FOR DIMENSIONS AND  
71C-17 FOR TOP ELEV.

NOTE: 1 (ONE) CUBIC FOOT MINIMUM OF # 57 WASHED  
STONE IS REQUIRED BEHIND EACH WEEP HOLE.



— SIDE ELEV. —

REVISED	F.B.	PG.	DATE: <b>4/19/74</b>
<b>9/14/90</b>			SCALE: <b>None</b>
			DRAWN BY: <b>PNR</b>
			CHECKED BY: <b>NBM, FAP</b>
			CITY ENGINEER: <b>DEC</b>

**Standard Detail**  
**Reinforced Brick Headwall With Wing Walls**  
**For 54" RCP and Over**  
**(With Reinforced Steel)**

OFFICE OF THE  
**CITY ENGINEER**  
 GASTONIA, N.C.  
 FILE NO. **71C-16**