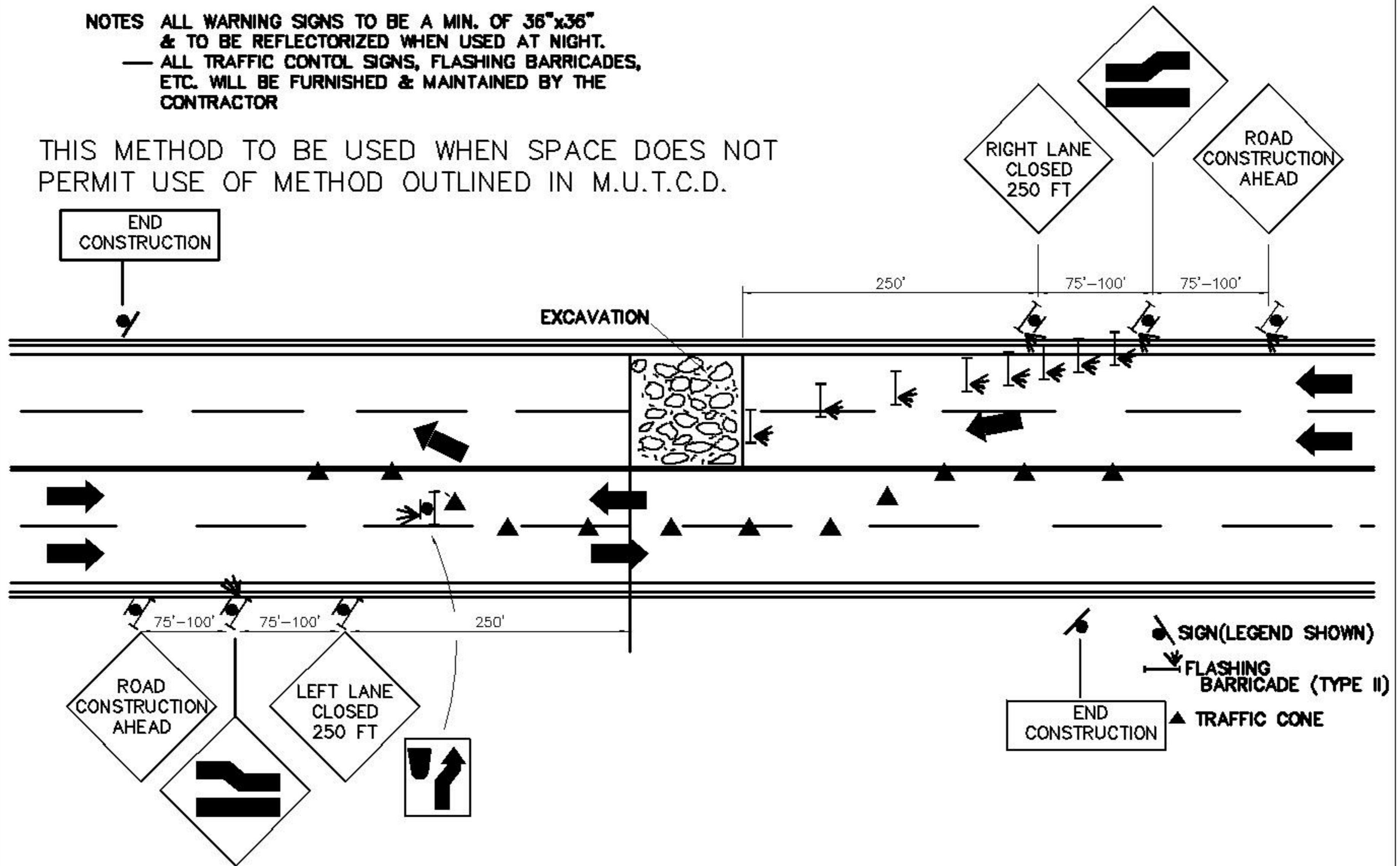


NOTES ALL WARNING SIGNS TO BE A MIN. OF 36"x36"
 & TO BE REFLECTORIZED WHEN USED AT NIGHT.
 — ALL TRAFFIC CONTROL SIGNS, FLASHING BARRICADES,
 ETC. WILL BE FURNISHED & MAINTAINED BY THE
 CONTRACTOR

THIS METHOD TO BE USED WHEN SPACE DOES NOT
 PERMIT USE OF METHOD OUTLINED IN M.U.T.C.D.



REVISED	F.B.	PG.	DATE: 7-30-85
			SCALE: NONE
			DRAWN BY: P.N.R.
			CHECKED BY: D.K.L.
			CITY ENGINEER: D.E.C.

STANDARD DETAIL

**SIGNING CONSTRUCTION & MAINTENANCE
 OPERATIONS ON 4-LANE UNDIVIDED HIGHWAY
 WHERE HALF THE ROADWAY IS CLOSED**

OFFICE OF THE
 CITY ENGINEER
 GASTONIA, N.C.

FILE NO. **71E-11**