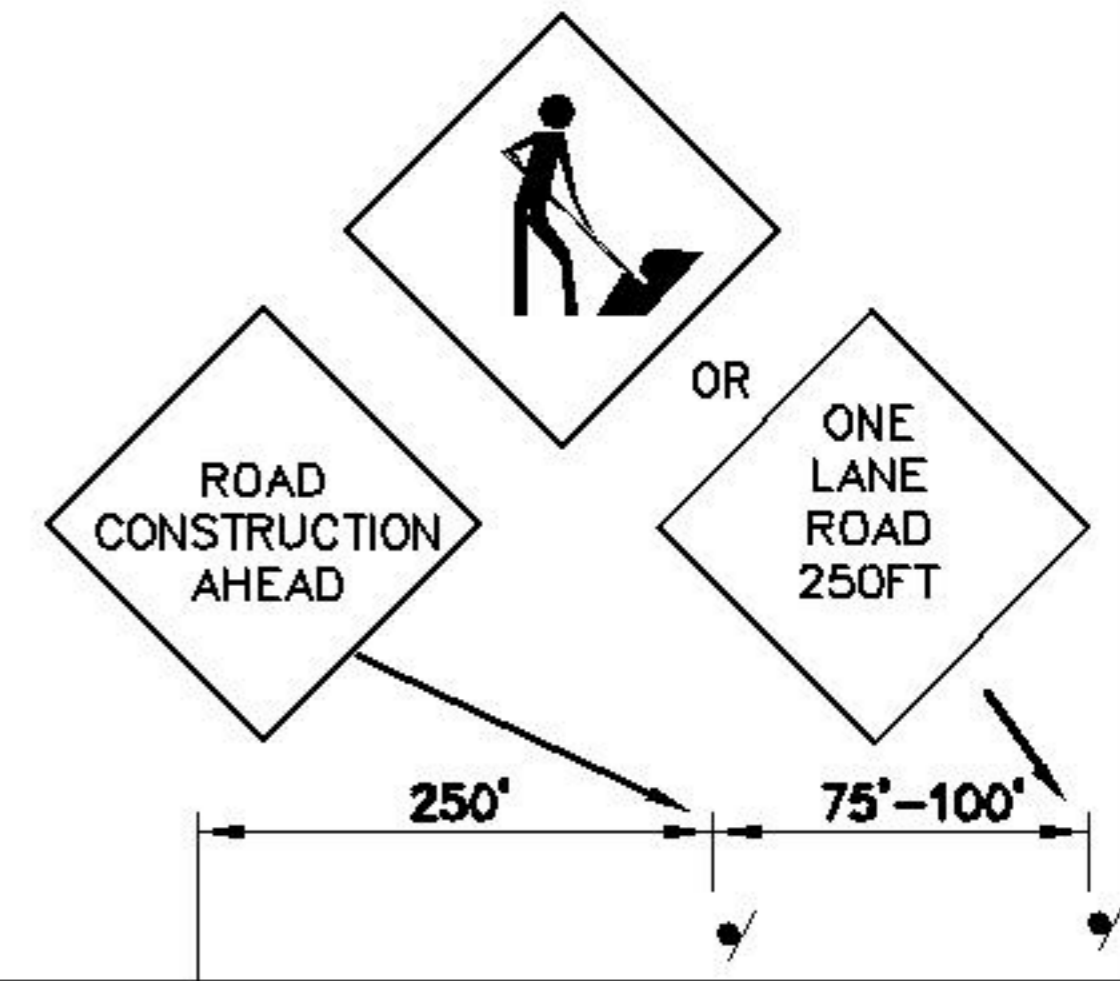
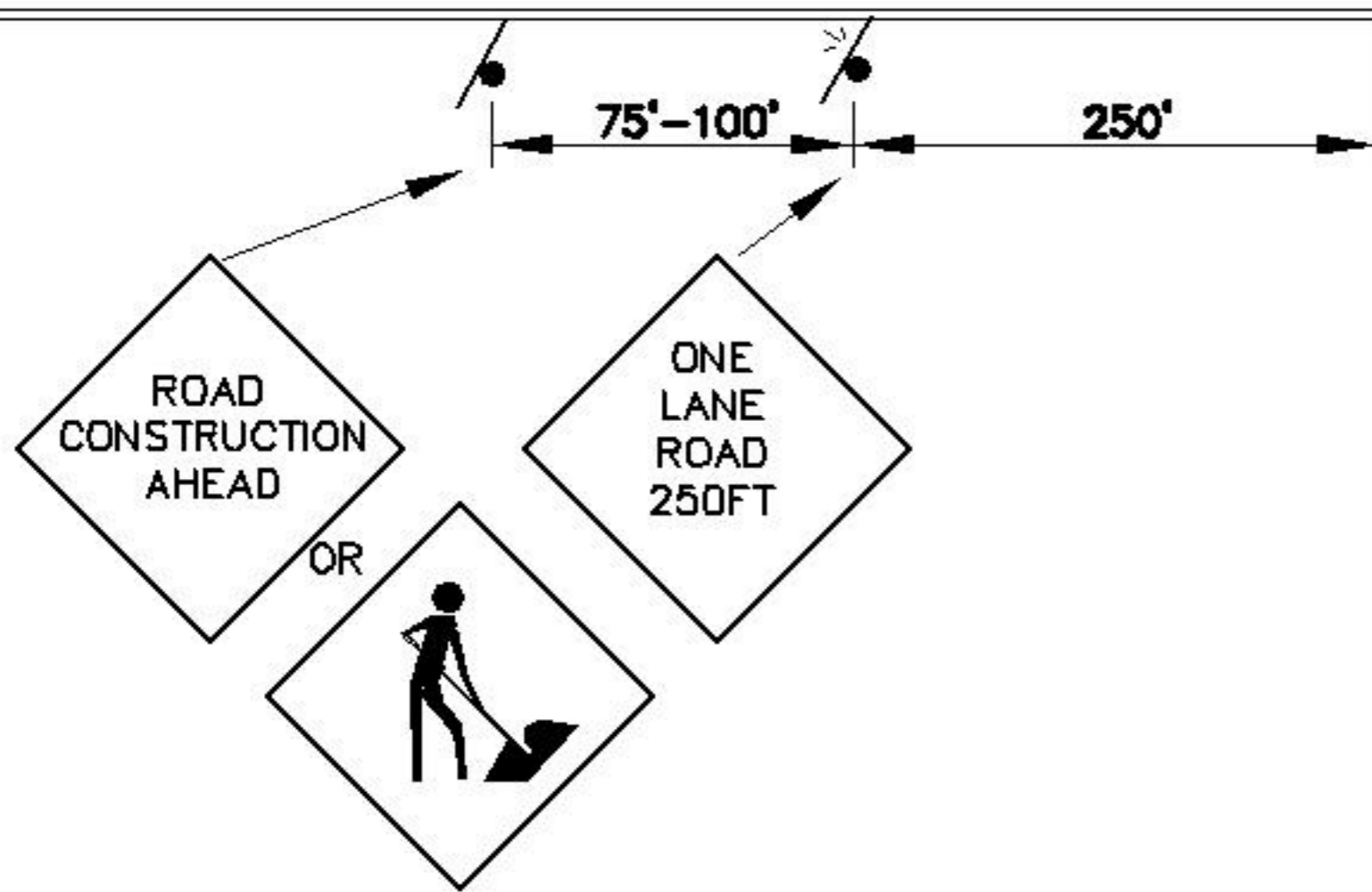


NOTES: ALL WARNING SIGNS TO BE A MIN. OF 36" x 36"
 & TO BE REFLECTORIZED WHEN USED AT NIGHT.
 — ALL TRAFFIC CONTROL SIGNS, FLASHING BARRICADES,
 ETC. WILL BE FURNISHED & MAINTAINED BY THE
 CONTRACTOR.

THIS METHOD TO BE USED WHEN SPACE DOES NOT
 PERMIT USE OF METHOD OUTLINED IN M.U.T.C.D.



EXCAVATION



● SIGN (LEGEND SHOWN)
 ▲ TRAFFIC CONE

REVISED	F.B.	PG.	DATE: 7-30-85
			SCALE: NONE
			DRAWN BY: P.N.R.
			CHECKED BY: D.K.L.
			CITY ENGINEER: D.E.C.

STANDARD DETAIL
SIGNING CONSTRUCTION & MAINTENANCE
OPERATIONS ON TWO LANE STREETS WHERE
ONE LANE IS CLOSED-LIGHTLY TRAVELED STREET

OFFICE OF THE
 CITY ENGINEER
 GASTONIA, N.C.
 FILE NO. **71E-14**