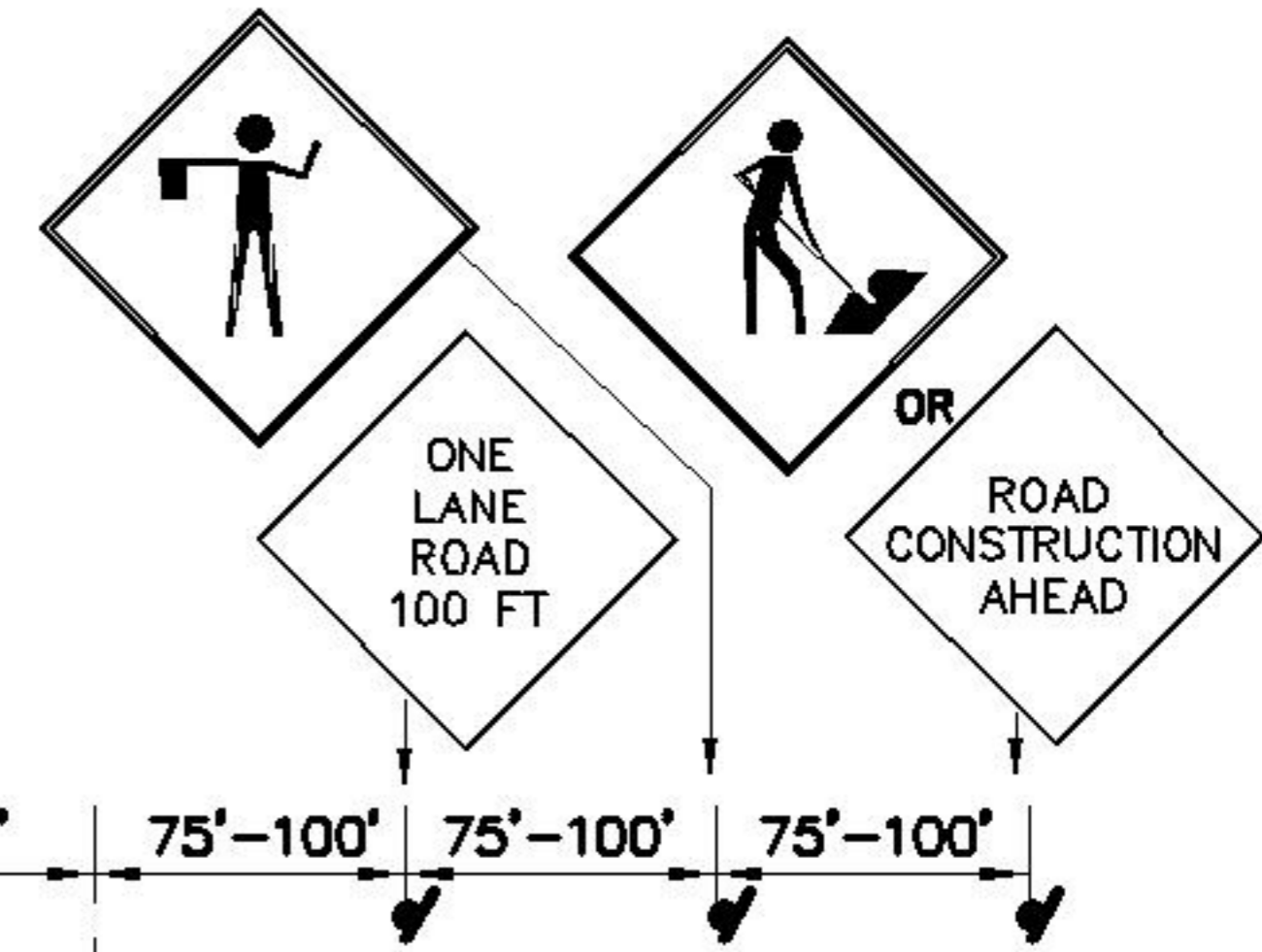


**NOTES:**

- ① ALL WARNING SIGNS TO BE A MINIMUM OF 36"x36" AND TO BE REFLECTORIZED WHEN USED AT NIGHT.
- ② ALL TRAFFIC CONTROL SIGNS, FLASHING BARRICADES, ETC. WILL BE FURNISHED AND MAINTAINED BY THE CONTRACTOR.
- ③ THIS METHOD TO BE USED WHEN SPACE DOES NOT PERMIT USE OF METHOD OUTLINED IN M.U.T.C.D.



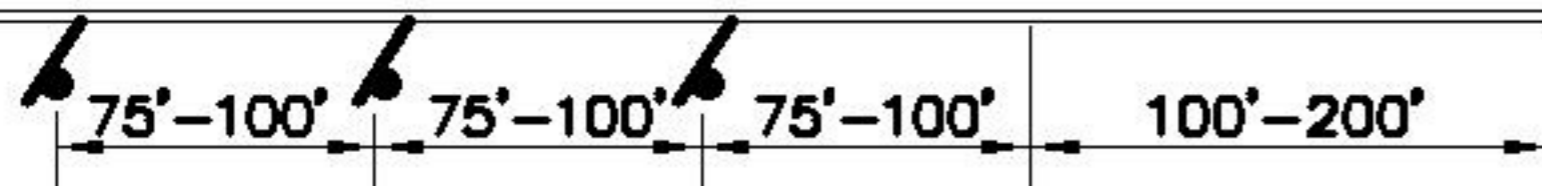
EXCAVATION

100'-200'

75'-100'

75'-100'

75'-100'



75'-100'

75'-100'

75'-100'

100'-200'

**LEGEND**

-  SIGN (LEGEND SHOWN)
-  FLAGMAN

REVISED	F.B.	PG.	DATE: 7-30-85
			SCALE: NONE
			DRAWN BY: R.M.N.
			CHECKED BY: D.K.L.
			CITY ENGINEER: D.E.C.

**STANDARD DETAIL**

**STANDARD LAYOUT FOR SIGNING CONSTRUCTION & MAINTENANCE OPERATIONS ON TWO LANE STREETS WHERE ONE LANE IS CLOSED. ACTUAL CONSTRUCTION - HEAVY TRAVELED STREET**

OFFICE OF THE  
CITY ENGINEER  
GASTONIA, N.C.

FILE NO. **71E-15**