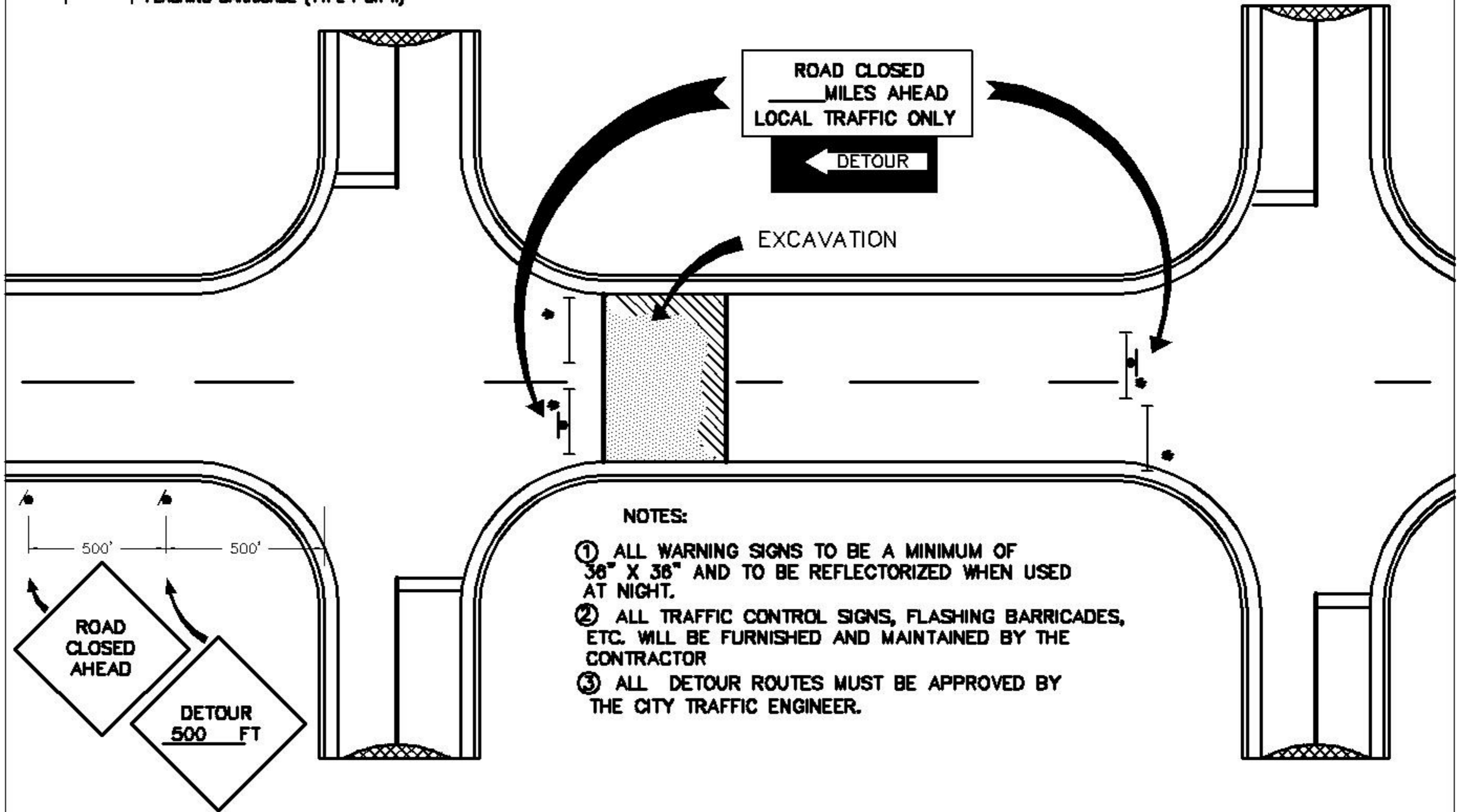


LEGEND

▲ SIGN (LEGEND SHOWN)

—*— FLASHING BARRICADE (TYPE I OR II)

SIGNING IN SAME SEQUENCE FOR THIS DIRECTION



NOTES:

- ① ALL WARNING SIGNS TO BE A MINIMUM OF 36" X 36" AND TO BE REFLECTORIZED WHEN USED AT NIGHT.
- ② ALL TRAFFIC CONTROL SIGNS, FLASHING BARRICADES, ETC. WILL BE FURNISHED AND MAINTAINED BY THE CONTRACTOR
- ③ ALL DETOUR ROUTES MUST BE APPROVED BY THE CITY TRAFFIC ENGINEER.

REVISED	F.B.	PG.	DATE: 7-30-85
			SCALE: NONE
			DRAWN BY: R.M.N.
			CHECKED BY: D.K.L.
			CITY ENGINEER: .D.E.C.

STANDARD DETAIL

LAYOUT FOR SIGNING CONSTRUCTION AND MAINTENANCE OPERATIONS FOR TWO LANE STREETS - STREET CLOSING PROCEDURE

OFFICE OF THE
CITY ENGINEER
GASTONIA, N.C.

FILE NO. **71E-4**